

Research

Open Access

An experimental model of rhinovirus induced chronic obstructive pulmonary disease exacerbations: a pilot study

Patrick Mallia¹, Simon D Message¹, Tatiana Kebabze¹, Hayley L Parker¹, Onn M Kon² and Sebastian L Johnston^{* 1}

Address: ¹Department of Respiratory Medicine, National Heart and Lung Institute and Wright Fleming Institute of Infection & Immunity, Imperial College London, UK and ²St Mary's NHS Trust, Praed Street, London, UK

Email: Patrick Mallia - p.mallia@imperial.ac.uk; Simon D Message - Simon.Message@glos.nhs.uk; Tatiana Kebabze - t.kebadze@imperial.ac.uk; Hayley L Parker - hayley.l.parker@gsk.com; Onn M Kon - Onn.Kon@St-Marys.nhs.uk; Sebastian L Johnston^{*} - s.johnston@imperial.ac.uk

^{*} Corresponding author

Published: 06 September 2006

Received: 28 April 2006

Respiratory Research 2006, **7**:116 doi:10.1186/1465-9921-7-116

Accepted: 06 September 2006

This article is available from: <http://respiratory-research.com/content/7/1/116>

© 2006 Mallia et al; licensee BioMed Central Ltd.

This is an Open Access article distributed under the terms of the Creative Commons Attribution License (<http://creativecommons.org/licenses/by/2.0>), which permits unrestricted use, distribution, and reproduction in any medium, provided the original work is properly cited.

Abstract

Background: Acute exacerbations of COPD are a major cause of morbidity, mortality and hospitalisation. Respiratory viruses are associated with the majority of exacerbations but a causal relationship has not been demonstrated and the mechanisms of virus-induced exacerbations are poorly understood. Development of a human experimental model would provide evidence of causation and would greatly facilitate understanding mechanisms, but no such model exists.

Methods: We aimed to evaluate the feasibility of developing an experimental model of rhinovirus induced COPD exacerbations and to assess safety of rhinovirus infection in COPD patients. We carried out a pilot virus dose escalating study to assess the minimum dose of rhinovirus 16 required to induce experimental rhinovirus infection in subjects with COPD (GOLD stage II). Outcomes were assessed by monitoring of upper and lower respiratory tract symptoms, lung function, and virus replication and inflammatory responses in nasal lavage.

Results: All 4 subjects developed symptomatic colds with the lowest dose of virus tested, associated with evidence of viral replication and increased pro-inflammatory cytokines in nasal lavage. These were accompanied by significant increases in lower respiratory tract symptoms and reductions in PEF and FEV₁. There were no severe exacerbations or other adverse events.

Conclusion: Low dose experimental rhinovirus infection in patients with COPD induces symptoms and lung function changes typical of an acute exacerbation of COPD, appears safe, and provides preliminary evidence of causation.

Background

Chronic Obstructive Pulmonary Disease (COPD) is predicted to become the 3rd leading cause of death worldwide by 2020 [1]. Much of the morbidity, mortality and health care costs of COPD are associated with acute exacerbations[2]. Treatments for COPD exacerbations are only

partially effective, have significant side effects and do not address specific mechanisms involved in its pathogenesis. Bacterial infections are associated with around 50% of COPD exacerbations and although studies have demonstrated clinical improvement with antibacterial therapy, their therapeutic impact is still disappointing[3,4]. Recent

studies report symptoms of virus infection precede two thirds of COPD exacerbations[5] and viruses can be detected in the majority [5-8]. The majority of viruses detected in these studies were rhinoviruses, however a causal relationship between rhinovirus infection and COPD exacerbations has not been established.

Development of new therapies for COPD will require understanding mechanisms of virus-induced lower airway inflammation to identify molecular therapeutic targets. However, little is known about the pathophysiological changes occurring in the lower respiratory tract during COPD exacerbations. In asthma experimental rhinovirus infection has provided valuable insights into the mechanisms linking virus infections to asthma exacerbation [9-14]. The development of an experimental model of rhinovirus-induced COPD exacerbation would be a major step forward in COPD research by providing evidence of a causal relationship between rhinovirus infection and exacerbations, thereby providing impetus to efforts to develop antiviral therapy[15,16]. Such a model would also permit detailed studies of the pathogenesis of COPD exacerbation in a manner not possible with naturally occurring exacerbations. Experimental rhinovirus infection has never previously been carried out in patients with COPD and its effect in this patient group is not known. Safety is the primary concern in all such studies and particularly in relation to COPD as, compared with the mild asthmatics, COPD patients are older, have more severe airway obstruction and less reversibility and are smokers or ex-smokers.

To investigate the feasibility and safety of developing a model of COPD exacerbation and to investigate a causative role of virus infection we conducted a virus dose-escalating pilot study in which we inoculated subjects with COPD with rhinovirus 16 (RV16) and assessed changes in upper and lower respiratory tract symptoms, lung function, and virus replication and inflammatory responses in nasal lavage.

Methods

Pilot study design

As there is no precedent for such a study in COPD patients, we designed this pilot study based on published literature and previous experience with challenge studies in normal volunteers and asthmatics. We elected to carry out a virus dose-escalating study to determine the lowest dose of virus that would induce colds in COPD patients. Studies in asthmatic volunteers have inoculated between 100 and 10,000 virus units (tissue culture infective doses 50% [TCID₅₀])[9,15]. As this inoculum has not been previously administered to COPD patients and its safety in this patient group was unknown, an initial low dose of 10 TCID₅₀ of RV16 was selected as the starting dose. We developed a protocol whereby 5 subjects would be inoculated and if the criteria for completion were not achieved then 100 TCID₅₀ would be inoculated into a subsequent group of 5 subjects, followed by 5-fold increasing doses of virus until the criteria for completion of the study were satisfied. The protocol defined criteria for completion of the study were:

1. Colds in $\geq 50\%$ of subjects according to clinical criteria and $\geq 80\%$ evidence of infection according to virological criteria (detecting virus in nasal secretions or a four-fold or greater serum neutralizing antibody response in serum) *and*:
2. An acute exacerbation of COPD (as defined using the lower respiratory tract scoring system) in $\geq 80\%$ of subjects *and*:
3. No severe exacerbations or other adverse events.

Study subjects

Subjects were recruited from the Chest Clinic, St Mary's Hospital, London, UK and from local General Practices and fulfilled the inclusion and exclusion criteria in Table 1. Ethical approval was obtained from the Local Research

Table 1: Inclusion/exclusion criteria for study subjects.

-
- Age 40–75 years.
 - No history of asthma or allergic rhinitis.
 - Not atopic on skin testing.
 - Current or ex-smokers with at least 20 pack years cumulative smoking.
 - Post-bronchodilator FEV₁ $\leq 80\%$ and $\geq 50\%$ predicted for age and height.
 - Post-bronchodilator FEV₁/FVC ratio less than 70% predicted.
 - β -agonist reversibility of less than 12%.
 - Absence of a current or previous history of bronchiectasis, carcinoma of the bronchus or other significant respiratory disease (other than COPD).
 - Absence of significant systemic disease.
 - No COPD exacerbation or respiratory tract infection within the previous 8 weeks.
 - Serum antibodies to rhinovirus 16 at screening in a titre $<1:2$.
 - No treatment with oral, inhaled or nasal topical steroids, long-acting β -agonists or tiotropium in the previous 3 months.
-

Ethics Committee and informed consent obtained from all subjects.

Experimental infection protocol

At an initial screening visit suitability for the study was assessed and symptom diary cards and home spirometry commenced. Inoculation was carried out 2 weeks after screening on study day 0 after spirometry and nasal lavage were performed and blood drawn for baseline serology. The subjects were seen daily for clinical review and nasal lavage on the 8 days post-inoculation and on day 11. Clinic spirometry was performed on study days 4, 7 and 11. At a final visit 6 weeks after inoculation convalescent nasal lavage and serum were collected and spirometry performed.

Clinical procedures

Symptom scores

Subjects completed daily diary cards of upper and lower respiratory tract symptoms from 2 weeks prior to until 6 weeks after the day of inoculation.

Upper respiratory tract symptoms

The scoring system and clinical criteria for a cold were derived from Jackson *et al*[17]. The subjects recorded the following symptoms on a scale of 0 (no symptoms) to 3 (severe) – sneezing, runny nose, blocked nose, sore throat or hoarse voice, headache or face pain, generally unwell, fever or shivery, cough. A cold was considered to be present if 2 of the following 3 criteria were present[17]:

1. A cumulative symptom score of at least 14 over a 6-day period.
2. The subjective impression of a cold.
3. Rhinorrhoea present on at least 3 days.

Lower respiratory tract symptoms

The most commonly adopted definitions of COPD exacerbations rely on identifying a worsening of the previous stable state based on reporting of increased symptoms[4,18,19]. We used a scoring system (adapted from Calverley *et al*[20]) with which subjects quantified the severity of lower respiratory tract symptoms (Table 2). Based on clinical study scoring systems an exacerbation was defined as an increase over baseline of at least 2 points on 2 consecutive days[4,18-20]. To correct for baseline symptoms, the mean score for each patient on days -6 to 0 was subtracted from post-inoculation scores for both upper and lower respiratory tract scores.

Definition of a severe exacerbation

As the primary aim of the study was to evaluate the safety of experimental rhinovirus infection in COPD subjects,

we used the following criteria for defining a severe exacerbation.

1. An increase in shortness of breath score by 2 points or more on 2 consecutive days.
2. An increase in wheeze score by 3 points or more on 2 consecutive days.
3. A fall in FEV₁ or PEF of 40% or more from baseline.
4. The subject developed a subjective feeling of severe exacerbation and wished to have treatment.
5. The study doctor decided that the subject had a severe exacerbation and required treatment.

If any subject fulfilled any 2 of these criteria he/she would be defined as having a severe exacerbation and would be withdrawn from the study and treatment instituted according to the clinical judgement of the investigators.

Virus inoculation

Details regarding the preparation and safety testing of the RV16 inoculum used in this study have been published[21]. The virus was diluted in a total volume of 4 ml of 0.9% saline and inoculated via the nasal route using an atomizer (No. 286; DeVilbiss Co., Heston UK) to spray the virus into each nostril. The subjects were instructed to inhale deeply through the nose simultaneously with activation of the atomizer. This procedure was repeated a number of times until all the inoculum was instilled.

Nasal lavage

Nasal lavage was performed by instilling 2.5 mL of 0.9% saline into each nostril, holding for 5 seconds and then expelling into a sterile container. Samples were divided into aliquots and frozen at -80°C until analyzed.

Spirometry

Clinic spirometry was performed on a Micromedical MicroLab (MicroMedical, Rochester, UK) spirometer according to BTS/ARTP guidelines[22]. At screening spirometry was performed at baseline and 15 minutes after administration of 200 µg salbutamol via metered dose inhaler and large volume spacer to assess reversibility. Repeat measurements were made on the same spirometer on study days 4, 7, and 11 and at 6 weeks. Subjects carried out daily home spirometry on a portable spirometer (MicroSpirometer; MicroMedical) performing 3 maximal forced expirations at the same time each day and the highest FEV₁, PEF and FVC were recorded. Baseline lung function was taken as the mean value of the recordings on days -6 to 0.

Table 2: Lower respiratory tract symptom scoring system.

| SYMPTOMS | SCORE | | | | |
|------------------------------|----------------|----------------------|-----------------------|---------------------|---------|
| | 0 | 1 | 2 | 3 | 4 |
| SHORTNESS OF BREATH | Not breathless | On moderate exertion | On mild exertion | On minimal exertion | At rest |
| WHEEZE | No wheeze | On moderate exertion | On mild exertion | On minimal exertion | At rest |
| COUGH | No cough | Mild | Moderate | Severe | |
| SPUTUM QUANTITY (PER 24 HRS) | None | Minimal (<30 ml) | Moderate (30–100 ml) | Large (>100 ml) | |
| SPUTUM QUALITY | None | Mucoid (clear) | Mucopurulent (yellow) | Purulent (green) | |

Laboratory analysis

Virus culture

Nasal lavages were inoculated onto Ohio HeLa cell cultures, and RV infection detected by presence of typical cytopathic effect. Cultures were examined daily for up to 7 days and if no CPE was observed were passaged up to 2 times further. Cultures were regarded as negative if they showed no cytopathic effect after the 2nd further passage. The serotype of the cultured viruses was confirmed by neutralization using RV16 specific antiserum (ATCC V-105-501-558; Bethesda, MD, USA)[23]. Assessment of antibody titre was by microneutralization test using previously published methods[21].

RNA extraction and PCR

Viral RNA was extracted from nasal lavage using the QIAmp Viral RNA Mini Kit (Qiagen Ltd) according to the manufacturer's instructions. Samples were analysed for picornaviruses by a reverse transcription method with random hexamers followed by PCR[24]. To differentiate rhinoviruses from other picornaviruses *Bgl*I enzyme restriction digestion was carried out on the amplicons generated by RT-PCR[25]. Viral load was measured with a real-time quantitative RT-PCR assay[16]. PCR for a panel of other respiratory viruses was carried out as previously described[5], together with PCR for human metapneumovirus adapted from published protocols[26].

Detection of cytokines

Cytokines were measured in nasal lavage using the human cytokine 10-plex assay™ (BioSource International). Assays were performed for IL-1, IL-2, IL-4, IL-5, IL-6, IL-8, IL-10, GM-CSF, TNF- α and IFN- γ . Fresh 0.1% dithiothreitol was added to samples at 1:5, samples were vortexed, left for 10 minutes on ice, aliquotted and stored at -80°C. Assays were carried according to the manufacturer's instructions and analysed on the Luminex™ 100 system.

Statistical analysis

Data are presented as mean (SEM) values. Variables were compared with repeated measures ANOVA or Student's t-test. Differences were considered significant for all statisti-

cal tests at p values of less than .05. Analysis was performed using GraphPad Prism version 4.00 for Windows, GraphPad Software, San Diego California USA.

Results

The first 4 subjects who were recruited and inoculated with 10 TCID₅₀ of the virus inoculum achieved all 3 of the study endpoints, and therefore the study was completed at this dose of virus. The clinical characteristics of these subjects are shown in Table 3.

Induction of symptoms

Upper respiratory tract

A clinical cold developed in all 4 subjects according to the predetermined clinical criteria; the time course of the upper respiratory tract symptoms is shown in Figure 1A. Upper respiratory tract symptom scores were significantly increased compared to baseline (ANOVA p < 0.0001) on study days 5 to 10 with the peak of cold symptoms occurring on day 7.

Lower respiratory tract

All subjects developed an increase in lower respiratory tract symptoms that fulfilled the pre-determined criteria for an exacerbation; the time course for lower respiratory tract scores is shown in Figure 1B. Lower respiratory tract symptom scores were significantly increased compared to baseline (ANOVA p < 0.0001) on days 7 to 14, with peak lower respiratory tract symptoms on days 10 and 11. When the individual symptoms were analysed separately, all five lower respiratory symptom domains increased from baseline (Figure 2), however the increases were only statistically significant for wheeze (ANOVA p = 0.01), cough (ANOVA p < 0.001) and sputum production (ANOVA p = 0.01). In terms of recovery, all symptom domains other than sputum production had recovered to baseline by day 20, however full recovery of sputum production took almost 4 weeks.

Lung function

Figure 3A shows the home PEF readings expressed as a 3-day average. Home PEF fell progressively from baseline

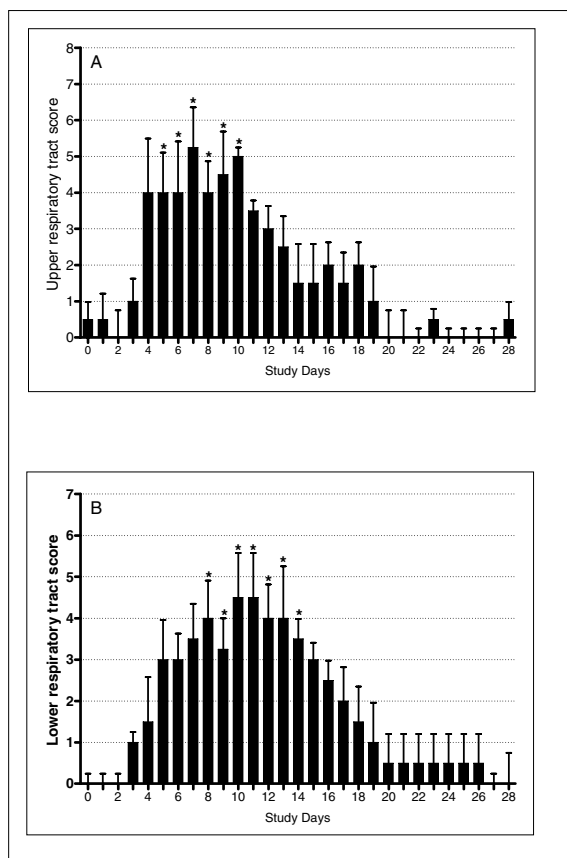


Figure 1
Daily upper and lower respiratory tract scores. (A) Mean total upper respiratory tract symptom scores. Symptoms were significantly increased on days 5 – 10. * indicates $p < 0.05$ compared to baseline. (B) Lower respiratory tract symptom scores. Symptoms were significantly increased on days 7 – 14. * indicates $p < 0.05$ compared to baseline. Mean scores on days -6 to 0 were subtracted from post-inoculation scores for both upper and lower respiratory tract scores.

after infection, reaching a nadir of approximately 12% reduction from baseline on days 9–11 through 21–23, before recovering on days 24–26 (ANOVA $p = 0.017$). PEF was significantly reduced on days 9–11 ($p = 0.022$) and 21–23 ($p = 0.016$). There was no statistically significant fall in FEV₁ measured on the home spirometers. The change in FEV₁ measured in clinic is shown in Figure 3B. FEV₁ fell by ~16% from a mean of 1.97L at baseline to 1.65L at infection ($p = 0.046$).

Cytokine measurements

Among the panel of cytokines measured in nasal lavage fluid changes were only detected in the levels of IL-6 and

IL-8 (Figure 4). Figures 4A and 4B show the time course of the changes in IL-6 and IL-8 levels respectively. The peak levels of cytokines after inoculation were compared to baseline. Mean IL-6 levels rose from 40.56 pg/ml to 381.2 pg/ml but this did not reach statistical significance ($p = 0.054$) (Figure 4C). There was a significant increase in IL-8 from 44.1 pg/ml when stable to 382.8 pg/ml during infection ($p = 0.046$) (Figure 4D).

Virology

All subjects had a negative PCR for picornavirus and the panel of other respiratory viruses on nasal lavage taken on day 0 prior to inoculation. PCR for picornavirus became positive on day 2 in all subjects and remained positive at day 8 ($n = 4$) and day 11 ($n = 2$). *Bgl*I digestion confirmed in all cases that the picornavirus detected by PCR was a rhinovirus. Co-infection was excluded by negative PCR for the other respiratory viruses in the panel. Rhinovirus was cultured from nasal lavage in all subjects and the serotype confirmed to be RV16 by neutralizations with specific RV16 antiserum. All subjects developed positive RV16-specific serologic responses to infection. PCR on convalescent samples taken at 6 weeks was negative for picornavirus. The results of the picornavirus quantitative PCR are shown in Figure 5. There was an increase in viral load (ANOVA $p < 0.0001$) that was significant on days 4 ($p < 0.01$) and 5, 6 and 7 ($p < 0.05$).

Safety

No subject fulfilled the criteria for a severe exacerbation or experienced any other adverse events.

Discussion

We report the first study to experimentally infect COPD patients with a respiratory virus. Our aim was to assess the feasibility and safety of developing a human experimental model of virus-induced COPD exacerbation, and to provide preliminary evidence for a causative role for virus infection in exacerbations. We demonstrated that experimental rhinovirus inoculation of subjects with underlying COPD results in clinical colds, together with increased lower respiratory tract symptoms and falls in PEF.

These data provide preliminary evidence of safety for this experimental model and suggest that it is feasible to further develop the model in larger numbers of subjects. They also provide preliminary evidence for a causal role for virus infections in inducing exacerbations of COPD.

In order to develop new therapies for COPD exacerbations a detailed understanding of the causes of exacerbations, as well as the pathogenic mechanisms is needed. Since studying naturally occurring exacerbations is extremely difficult, development of an experimental model in which causation could be confirmed and in

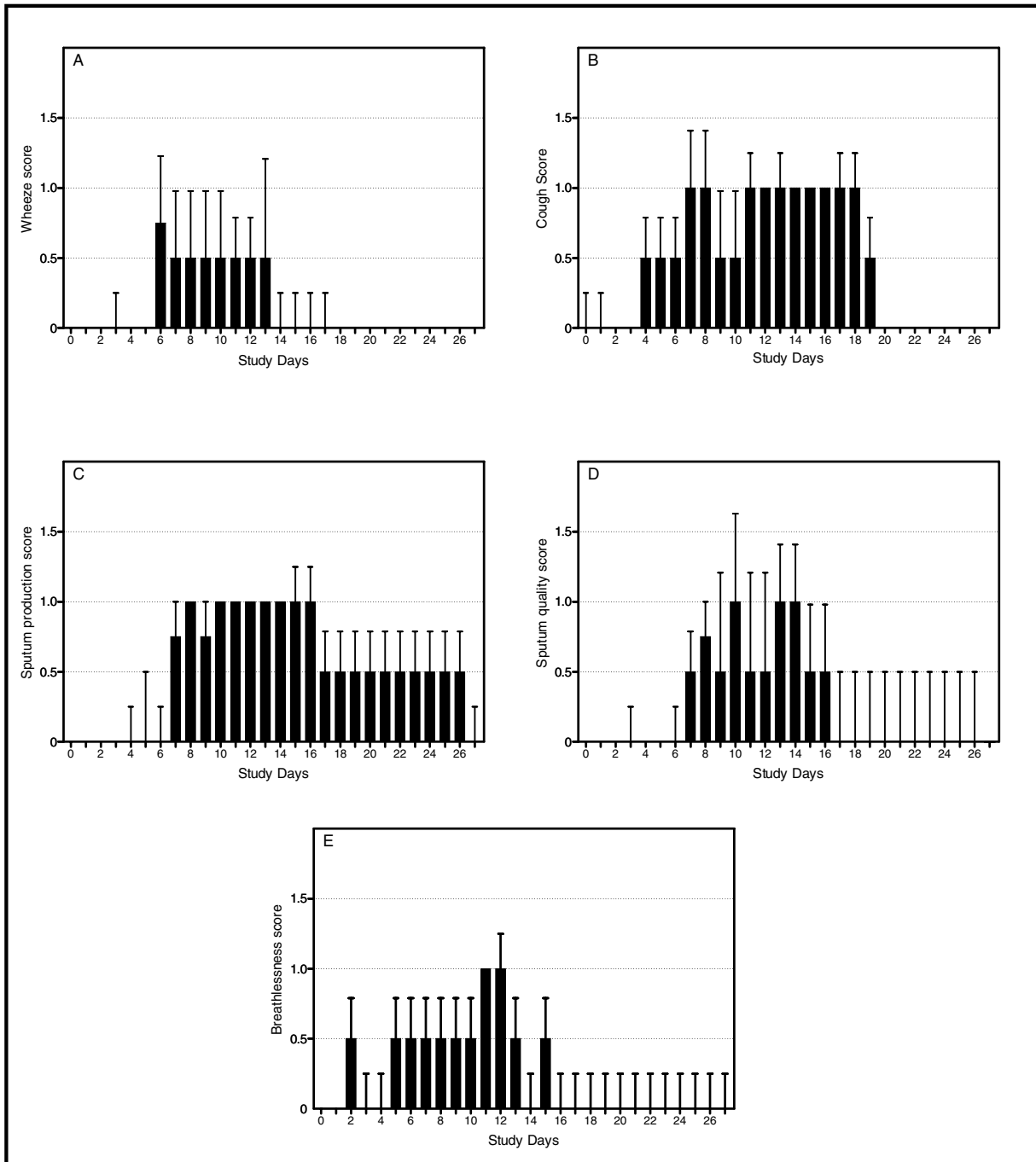


Figure 2
 Individual lower respiratory tract symptoms. (A) Wheeze ($p = 0.01$). (B) Cough ($p < 0.001$). (C) Sputum production ($p = 0.01$). (D) Sputum quality ($p = 0.19$). (E) Shortness of breath ($p = 0.82$).

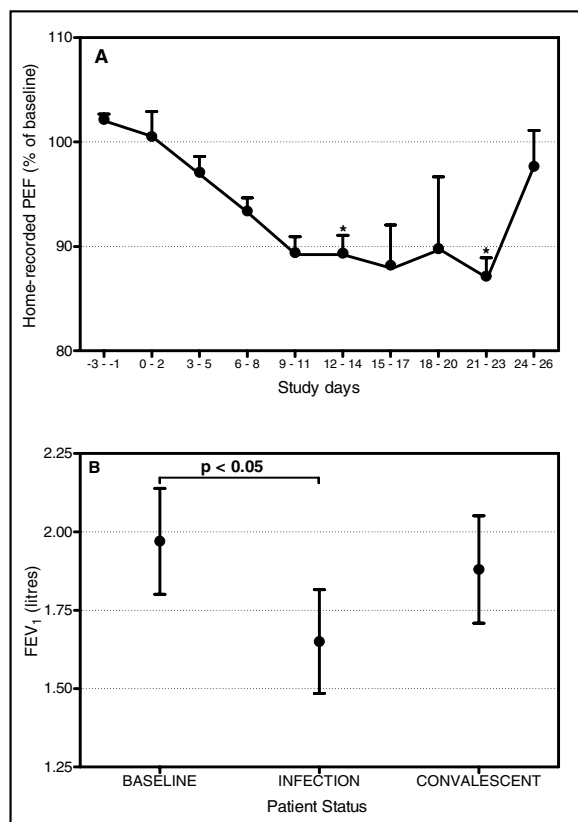


Figure 3

Daily and clinic spirometry measurements. (A) 3 day average of home-recorded PEF. There were significant falls in PEF on days 12 – 14 and 21 – 23. * indicates $p < 0.05$ compared to baseline. (B) FEV₁ measured in clinic. There was a significant fall in FEV₁ compared to baseline ($p < 0.05$).

which detailed clinical studies on mechanisms of disease could be carried out, would be a major step forward. Experimental virus infection has been used extensively in both healthy volunteers and asthmatics to study the pathogenesis of the common cold and virus-induced asthma exacerbations, as well as to identify and evaluate potential new treatments for these conditions [11,13,15,27]. Respiratory virus infections are associated with between 40% and 65% of COPD exacerbations [5-8], and rhinoviruses are the most common virus type detected. However the safety of experimental rhinovirus infection in COPD patients has never been evaluated.

Using a low dose of RV16 inoculum we successfully induced colds in COPD patients. In addition to the upper respiratory tract symptoms RV16 infection resulted in a sustained increase in lower respiratory tract symptoms and significant falls in lung function, typical of those seen

in naturally occurring exacerbations. Consistent with previous studies of naturally occurring exacerbations increases in symptoms and reduction in lung function persisted for between 2 and 4 weeks from virus inoculation [28].

The changes in PEF (~12%) seen in this study were of similar magnitude to that reported elsewhere [29]. The colds were accompanied by evidence of viral replication and increased pro-inflammatory cytokines in the upper respiratory tract, although the increase in IL-6 levels just failed to reach significance. As the aim of this study was primarily to ascertain the feasibility and safety of RV16 inoculation in COPD we did not carry out lower airway sampling but the results from this study suggest that further studies to evaluate the effect of rhinovirus infection on lower airway inflammation are warranted. Although epidemiological studies have shown an association between virus infection and COPD exacerbation they do not prove causation. This study provides further supportive evidence in addition to epidemiological studies that respiratory virus infection can cause COPD exacerbations. Given that there is data suggesting virus-induced exacerbations are more severe [5], development of effective antiviral strategies is an urgent priority.

The timing of upper respiratory tract and lower respiratory tract symptoms observed in this study may have important implications for diagnostic epidemiology of virus induced COPD exacerbations [5,6]. The virus load in nasal lavage was greatest on day 4, whereas the peak lower respiratory tract symptoms occurred on days 10/11. Assessing the relationship between virus infection and COPD exacerbations depends on sampling for viruses when patients report lower respiratory tract symptoms. Sampling the upper respiratory tract for viruses when patients present with lower respiratory tract symptoms may give a falsely low detection rate, as sampling will likely occur well after the peak of virus load has passed in the upper respiratory tract.

This interpretation is supported by our data as only 2/4 (50%) of the subjects had positive nasal lavage PCR for rhinoviruses on day 11. Further evidence to support this comes from the East London COPD study in which 64% of exacerbations were preceded by colds but a virus was detected in only 39% [5], so the true association of respiratory virus infection and COPD exacerbations is likely even higher than reported. This may also have important implications for therapy of virus-induced COPD exacerbations. The cold symptoms peaked on day 7, but were clearly elevated as early as day 4, co-incident with the peak in virus load, whereas lower respiratory symptoms peaked on days 10 & 11, suggesting that if an effective antiviral or anti-inflammatory agent were administered at the onset of

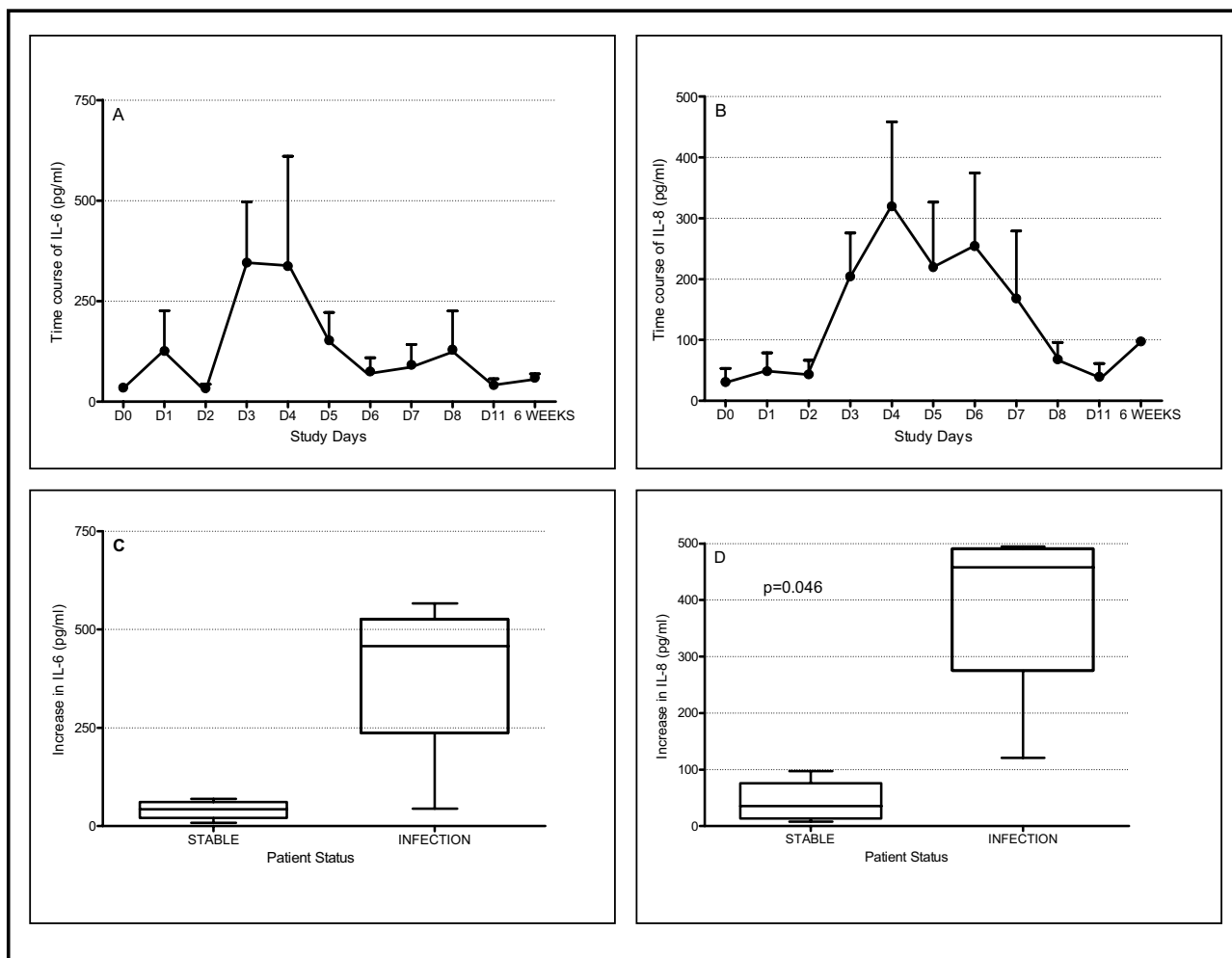


Figure 4

Levels of IL-6 and IL-8 in nasal lavage. (A) Time course of IL-6. (B) Time course of IL-8. (C) Mean levels of IL-6 in nasal lavage when stable and at exacerbation. There was an increase in IL-6 at exacerbation but this was not significant ($p = 0.054$). (D) Mean levels of IL-8 when stable and at exacerbation. There was a significant increase in IL-8 at exacerbation ($p = 0.046$).

cold symptoms, there is a window of several days for treatment to exert a beneficial effect. There is already data suggesting that early treatment of exacerbations leads to better outcomes[30] and this data should encourage efforts to develop new treatments for exacerbations of COPD.

An unexpected finding of this study was that all subjects developed colds and exacerbations with 10- to 1,000-fold lower doses of virus than used in previous studies in asthmatic and normal volunteers[9,15]. This could suggest that COPD patients have increased susceptibility to virus

infection, as has recently been demonstrated in asthma [31,32]. Further studies will be needed to investigate this interesting and potentially very important possibility.

We acknowledge that the conclusions of this study are derived from results on only 4 subjects, however as the pre-determined criteria for termination of the study were reached (infection and exacerbation in 80% of 5 subjects), we were obliged to terminate the study. We chose this study design as previous dose-finding studies in experimental virus infections have used similar patient numbers[33,34]. The data from this study suggests that

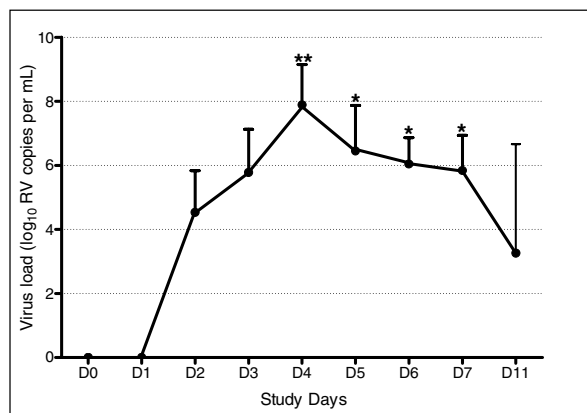


Figure 5

Viral load measured with a real-time quantitative RT-PCR assay. Viral load was significantly increased above baseline on days 4 – 7. ** indicates $p < 0.01$. * indicates $p < 0.05$.

experimental rhinovirus infection can be used to develop a valid and safe model of COPD exacerbation. Such a model could overcome the many obstacles that investigators face in studying naturally occurring exacerbations including under-reporting of exacerbations[5], delay in presentation[30], varying aetiology, difficulties in sampling the lower airway and variation in timing from onset of exacerbation to clinical assessment and sampling. These difficulties can all be overcome in the experimental setting, leading to high quality, well controlled data that is likely to take us significant steps forward in the search for novel therapies.

Conclusion

We have shown that experimental rhinovirus infection in COPD patients results in colds that are accompanied by lower respiratory tract symptoms and lung function changes typical of naturally occurring exacerbations. These were associated with evidence of viral replication and inflammatory cytokines in the upper airway. These findings suggest experimental rhinovirus infection has potential as a model of COPD exacerbation.

Competing interests

SLJ has received research funding from GlaxoSmithKline, Merck & Sanofi-Aventis. SLJ has also received consulting fees from GlaxoSmithKline and fees for speaking from GlaxoSmithKline, Merck, Pfizer & Sanofi-Aventis.

None of the other authors has any competing interests.

Authors' contributions

PM assisted in the study design, recruited the subjects and carried out the clinical and laboratory procedures.

SM assisted in study design and in clinical and laboratory procedures in the study.

TK carried out the PCRs for respiratory viruses.

HP carried out the human cytokine 10-plex assay™.

OMK was responsible for clinical monitoring of the subjects during the study.

SLJ conceived the study idea and developed the study protocol.

All authors have read and approved the final manuscript.

Acknowledgements

The authors thank staff at the Chest and Allergy Clinic, St Mary's Hospital and local General Practices for their help in subject recruitment.

This study was supported by an unrestricted grant from GlaxoSmithKline and by British Lung Foundation/Severin Wunderman Family Foundation Lung Research Programme grant number P00/2.

Spirometers were provided by Micro Medical Ltd, Rochester, UK.

References

- Murray CJ, Lopez AD: **Alternative projections of mortality and disability by cause 1990-2020: Global Burden of Disease Study.** *Lancet* 1997, **349**:1498-1504.
- National Institute for Clinical Excellence (NICE): **Chronic obstructive pulmonary disease: national clinical guideline for management of chronic obstructive pulmonary disease in adults in primary and secondary care.** *Thorax* 2004, **59** (Suppl 1):.
- MacNee W, Calverley PM: **Chronic obstructive pulmonary disease . 7: Management of COPD.** [see comment]. [Review] [99 refs]. *Thorax* 2003, **58**:261-265.
- Anthonisen NR, Manfreda J, Warren CP, Hershfield ES, Harding GK, Nelson NA: **Antibiotic therapy in exacerbations of chronic obstructive pulmonary disease.** *Annals of Internal Medicine* 1987, **106**:196-204.
- Seemungal T, Harper-Owen R, Bhowmik A, Moric I, Sanderson G, Message S, Maccallum P, Meade TW, Jeffries DJ, Johnston SL, Wedzicha JA: **Respiratory viruses, symptoms, and inflammatory markers in acute exacerbations and stable chronic obstructive pulmonary disease.** [see comments]. *American Journal of Respiratory & Critical Care Medicine* 2001, **164**:1618-1623.
- Rohde G, Wiethage A, Borg I, Kauth M, Bauer TT, Gillissen A, Bufe A, Schultze-Werninghaus G: **Respiratory viruses in exacerbations of chronic obstructive pulmonary disease requiring hospitalisation: a case-control study.** *Thorax* 2003, **58**:37-42.
- Papi A, Bellettato CM, Braccioni F, Romagnoli M, Casolari P, Caramori G, Fabbri LM, Johnston SL: **Infections and airway inflammation in chronic obstructive pulmonary disease severe exacerbations.** *American Journal of Respiratory & Critical Care Medicine* 2006, **173**:1114-1121.
- Cameron RJ, de Wit D, Welsh TN, Ferguson J, Grissell TV, Rye PJ: **Virus infection in exacerbations of chronic obstructive pulmonary disease requiring ventilation.** *Intensive Care Medicine* 2006, **32**:1022-1029.
- Grunberg K, Sharon RF, Sont JK, In V, Van Schadewijk WA, de Klerk EP, Dick CR, Van Krieken JH, Sterk PJ: **Rhinovirus-induced airway inflammation in asthma: effect of treatment with inhaled**

- corticosteroids before and during experimental infection.** *American Journal of Respiratory & Critical Care Medicine* 2001, **164**:1816-1822.
10. Fraenkel DJ, Bardin PG, Sanderson G, Lampe F, Johnston SL, Holgate ST: **Lower airways inflammation during rhinovirus colds in normal and in asthmatic subjects.** *American Journal of Respiratory & Critical Care Medicine* 1995, **151**:879-886.
 11. Lemanske RF, Dick EC, Swenson CA, Vrtis RF, Busse WW: **Rhinovirus upper respiratory infection increases airway hyperactivity and late asthmatic reactions.** *Journal of Clinical Investigation* 1989, **83**:1-10.
 12. Bardin PG, Fraenkel DJ, Sanderson G, van Schalkwyk EM, Holgate ST, Johnston SL: **Peak expiratory flow changes during experimental rhinovirus infection.** *European Respiratory Journal* 2000, **16**:980-985.
 13. Calhoun WJ, Dick EC, Schwartz LB, Busse WW: **A common cold virus, rhinovirus 16, potentiates airway inflammation after segmental antigen bronchoprovocation in allergic subjects.** *Journal of Clinical Investigation* 1994, **94**:2200-2208.
 14. Seymour ML, Gilby N, Bardin PG, Fraenkel DJ, Sanderson G, Penrose JF, Holgate ST, Johnston SL, Sampson AP: **Rhinovirus infection increases 5-lipoxygenase and cyclooxygenase-2 in bronchial biopsy specimens from nonatopic subjects.** *Journal of Infectious Diseases* 2002, **185**:540-544.
 15. Turner RB, Wecker MT, Pohl G, Witek TJ, McNally E, St George R, Winther B, Hayden FG: **Efficacy of tremacamra, a soluble intercellular adhesion molecule 1, for experimental rhinovirus infection: a randomized clinical trial.** *JAMA* 1999, **281**:1797-1804.
 16. Hayden FG, Herrington DT, Coats TL, Kim K, Cooper EC, Villano SA, Liu S, Hudson S, Pevear DC, Collett M, McKinlay M, Group. PRIS: **Efficacy and safety of oral pleconaril for treatment of colds due to picornaviruses in adults: results of 2 double-blind, randomized, placebo-controlled trials.** *Clinical Infectious Diseases* 2003, **36**:1523-1532.
 17. GG J, HF D, IG S, AV B: **Transmission of the common cold to volunteers under controlled conditions. I. The common cold as a clinical entity.** *Archives of Internal Medicine* 1958, **101**:267-278.
 18. Seemungal TA, Donaldson GC, Paul EA, Bestall JC, Jeffries DJ, Wedzicha JA: **Effect of exacerbation on quality of life in patients with chronic obstructive pulmonary disease.** *American Journal of Respiratory & Critical Care Medicine* 1998, **157**:1418-1422.
 19. Burge S, Wedzicha JA: **COPD exacerbations: definitions and classifications.** *European Respiratory Journal - Supplement* 2003, **41**:46s-53s.
 20. Calverley P, Pauwels R, Vestbo J, Jones P, Pride N, Gulsvik A, Anderson J, Maden C, TRial of Inhaled STeroids ANd long-acting beta: **Combined salmeterol and fluticasone in the treatment of chronic obstructive pulmonary disease: a randomised controlled trial.[comment][erratum appears in Lancet. 2003 May 10;361(9369):1660].** *Lancet* 2003, **361**:449-456.
 21. Bardin PG, Fraenkel DJ, Sanderson G, Dorward M, Lau LC, Johnston SL, Holgate ST: **Amplified rhinovirus colds in atopic subjects.** *Clinical & Experimental Allergy* 1994, **24**:457-464.
 22. **Guidelines for the measurement of respiratory function. Recommendations of the British Thoracic Society and the Association of Respiratory Technicians and Physiologists.[comment].** *Respiratory Medicine* 1994, **88**:165-194.
 23. S.L.J, Tyrrell DA: **Rhinoviruses.** In *Diagnostic procedures for viral, rickettsial and chlamydial infections* Edited by: Lennette EH, Schmidt NJ (ed). American Public Health Association, Washington DC; 1995:553-563.
 24. Chauhan AJ, S.L.J: **Advances in the diagnosis of respiratory virus infections.** Skoner DP (ed) *Asthma and Respiratory Infections* Marcel Dekker, Inc, New York 2001 2003:221-244.
 25. Papadopoulos NG, Hunter J, Sanderson G, Meyer J, Johnston SL: **Rhinovirus identification by BglI digestion of picornavirus RT-PCR amplicons.** *Journal of Virological Methods* 1999, **80**:179-185.
 26. Maertzdorf J, Wang CK, Brown JB, Quinto JD, Chu M, de Graaf M, van den Hoogen BG, Spaete R, Osterhaus AD, Fouchier RA: **Real-time reverse transcriptase PCR assay for detection of human metapneumoviruses from all known genetic lineages.** *Journal of Clinical Microbiology* 2004, **42**:981-986.
 27. Hayden FG, Fritz R, Lobo MC, Alvord W, Strober W, Straus SE: **Local and systemic cytokine responses during experimental human influenza A virus infection. Relation to symptom formation and host defense.** *Journal of Clinical Investigation* 1998, **101**:643-649.
 28. Seemungal TA, Donaldson GC, Bhowmik A, Jeffries DJ, Wedzicha JA: **Time course and recovery of exacerbations in patients with chronic obstructive pulmonary disease.** *American Journal of Respiratory & Critical Care Medicine* 2000, **161**:1608-1613.
 29. Calverley P, Pauwels DR, Lofdahl CG, Svensson K, Higenbottam T, Carlsson LG, Stahl E: **Relationship between respiratory symptoms and medical treatment in exacerbations of COPD.** *European Respiratory Journal* 2005, **26**:406-413.
 30. Wilkinson TM, Donaldson GC, Hurst JR, Seemungal TA, Wedzicha JA: **Early therapy improves outcomes of exacerbations of chronic obstructive pulmonary disease.[see comment].** *American Journal of Respiratory & Critical Care Medicine* 2004, **169**:1298-1303.
 31. Wark PA, Johnston SL, Bucchieri F, Powell R, Puddicombe S, Laza-Stanca V, Holgate ST, Davies DE: **Asthmatic bronchial epithelial cells have a deficient innate immune response to infection with rhinovirus.** *Journal of Experimental Medicine* 2005, **201**:937-947.
 32. Corne JM, Marshall C, Smith S, Schreiber J, Sanderson G, Holgate ST, Johnston SL: **Frequency, severity, and duration of rhinovirus infections in asthmatic and non-asthmatic individuals: a longitudinal cohort study.** *Lancet* 2002, **359**:831-834.
 33. Couch RB, Cate TR, Douglas RGJ, Gerone PJ, Knight V: **Effect of route of inoculation on experimental respiratory viral disease in volunteers and evidence for airborne transmission.** *Bacteriological Reviews* 1966, **30**:517-531.
 34. Hall CB, Douglas RGJ, Schnabel KC, Geiman JM: **Infectivity of respiratory syncytial virus by various routes of inoculation.** *Infection & Immunity* 1981, **33**:779-783.

Publish with **BioMed Central** and every scientist can read your work free of charge

"BioMed Central will be the most significant development for disseminating the results of biomedical research in our lifetime."

Sir Paul Nurse, Cancer Research UK

Your research papers will be:

- available free of charge to the entire biomedical community
- peer reviewed and published immediately upon acceptance
- cited in PubMed and archived on PubMed Central
- yours — you keep the copyright

Submit your manuscript here:
http://www.biomedcentral.com/info/publishing_adv.asp

